

Manual Blasting Machines

Cylinder Trolley CT-25 for CO2 Snow Blasting Machine SJ-25

- Transport of CO2 snow blasting machine SJ-25 and CO2 cylinder
- Very smooth operation
- For frequently changing locations
- Easy replacement of CO2 cylinder with loading ramp
- Additional storage space for hoses and accessories
- Usable with small and large CO2 cylinders



loading side with open ramp



user side



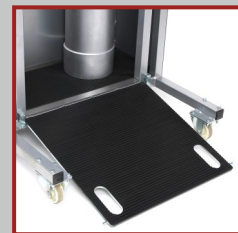
Storage hose package and blasting pistol holder



90° connections for compressed air and CO2



Safe holder for CO2 cylinders



Loading ramp for easy loading and unloading of CO2 cylinders

Technical data

Dimensions - length x width x height

1,210 mm x 800 mm x 1,280 mm (47.6" x 31.5" x 50.4")

Weight (without SJ-25 and cylidner)

148.0 kg (326.3 lb)